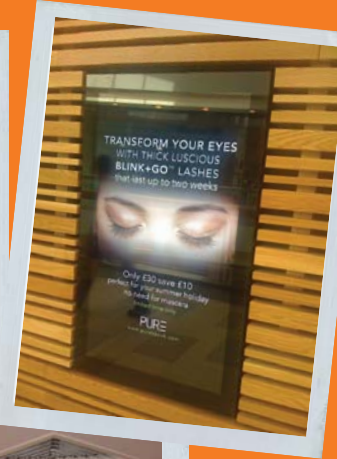


www.3dcentre.com

Sales: 0845 470 0845

Digital Signage



Innovative Advertising Solutions

www.3dcentre.com

DIGITAL POSTER

LCD
ADVERTISING
DISPLAY

TILING LCD
DISPLAY

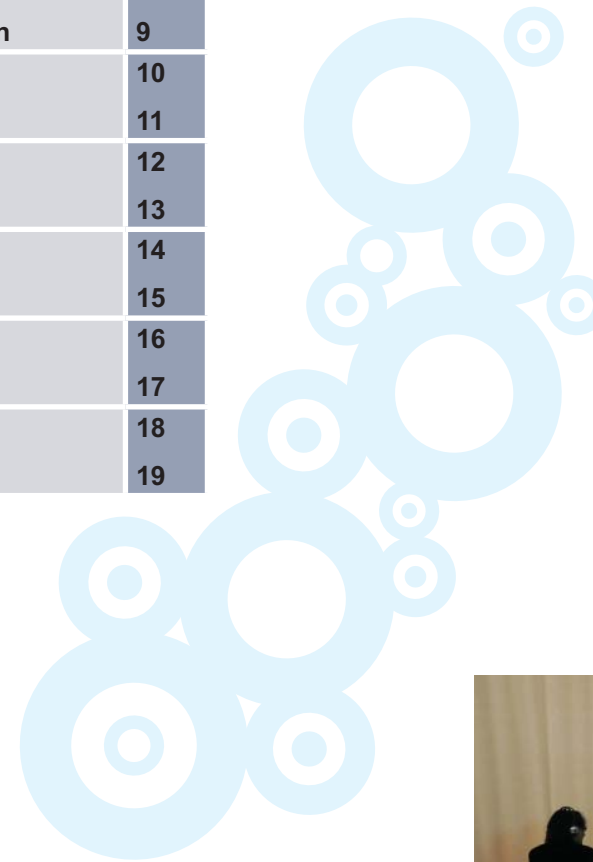
OPEN FRAME
DISPLAY

OPEN FRAME
TOUCH SCREEN
DISPLAY

CCTV MONITORS

NETWORK
DIGITAL SIGNAGE
PLAYERS

Contents	2
Introduction	3
LCD Landscape Advertising Display 7-82" Introduction	4
LCD Landscape Advertising Display 7-82" Specification	5
Freestanding Portrait Digital Poster 46-82" Introduction	6
Freestanding Portrait Digital Poster 46-82" Specification	7
Wall Mounted Digital Poster (Portrait Display) 20-40" Introduction	8
Wall Mounted Digital Poster (Portrait Display) 20-40" Specification	9
Tiling LCD Display (Video Wall) Introduction	10
Tiling LCD Display (Video Wall) Specification	11
CCTV Monitors Introduction	12
CCTV Monitors Specification	13
Open Frame Displays Introduction	14
Open Frame Displays Specification	15
Open Frame Touch Screen Displays Introduction	16
Open Frame Touch Screen Displays Specification	17
Signage Players Introduction	18
Signage Players Specification	19





Digital Signage

We supply digital signage solutions for a variety of settings, such as reception areas, meeting rooms, dining areas, retail facilities, restaurants, shopping malls, government buildings, hospitals, theatres and bus/rail stations. Virtually any organisation seeking effective public messaging can benefit from our solutions. Our products range from 7" to 82" displays for wall, ceiling or stand mounting. Our displays are compatible with a wide range of input standards USB, PC, DVI, composite video, S-Video, BNC, TV and CF/SD memory card. This makes them versatile and suitable for in store, public and leisure premises

See The Big Picture

"WE PROVIDE A TOTAL END TO END SOLUTION."



DIGITAL SIGNAGE SOLUTIONS

The medium has reinvigorated advertising and in no lean terms solved the problem of reaching to splintered audiences not watching TV. These ads are practically seen by the said audiences travelling on highways where the bill boards are erected. With digital signage businesses can interact with their clientele at the point-of-purchase and on both in-door and out-of-door placements.

Research has established that 70% of all purchase decisions are made in retail stores and not at home. That means that the adverts featured on TV, radio and the press cannot compare in efficiency with adverts featured in stores and retail outlets. With the ever increasing innovation and creativity in the use of digital signage installations, it is very easy to predict an increasing importance and usage of the technology by businesses in the 21st century.

applications. All the displays are plug and play, simply insert a USB with content and it will automatically start to play.

Our company objective is to fully understand all our customers requirements before presenting them with what we believe is the best panel display solution at the lowest market price.

DIGITAL ADVERTISING

While screen advertising is fast becoming a "must" in every prime location, venue owners have often encountered critical setbacks, lack of available digital content, TV channels don't usually fit public environments and the production of dedicated content from advertising specialists is too expensive and time consuming.

By engaging with our clients to fully appreciate their needs, we can provide the right signage solution that reflects the look, content and workflow. We will manage all your signage and messaging needs.

SOLUTIONS

Whether you're a hotel, restaurant, takeaway, cafe, retail outlet, leisure centre or car dealership, providing clients with eye catching messages and information is vital. We address the fast growing need for digital signage displays in areas within the public eye with ease and great value for money.

DIGITAL ADVERTISING

The future of advertising is today spelt in black and white, digital signage technology. This is clearly the future of out-of-home advertising.

Plug & Play



Displays are Plug and Play

1. Copy content to USB drive
2. Insert USB drive in to Display
3. Content will upload to memory and start playing automatically

DIGITAL ADVERTISING DISPLAYS

Digital display signage technology and digital advertising is the way forward for retail advertising. This is true for the businesses that make use of the technology and the firms behind these technology solutions.

FREE SOFTWARE

A user friendly and simple to use playlist creator and editor software is supplied free of charge with this product. It allows the user to create professional looking media content within minutes. Included are professional transition options with the software. Although all our screens are plug and play and will automatically play in a loop when inserted with a usb drive loaded with media content such as images.



Features

- Modern appearance
- High quality gloss finish
- Power time settings
- Remote Control
- Lock protect
- User friendly
- Scrolling text message
- Metal back casing

DIGITAL ADVERTISING

The use of the digital signage screen, regardless of the size, is undoubtedly better in the manner by which it delivers customer communication, education, motivation, and persuasion. It is a known fact that TV is a very effective advertising channel. Granted that the digital advertisement display borrows much from TV it can be said that this medium has great potential even as more and more of the same appear in business establishments. While the intent of signage use in business hasn't changed, the manner in which the intent is being presented is improving and it's certainly worth embracing.

VIDEO FORMATS

File format such as power point or flash can be converted to a format which is compatible with these displays.

INSTALLATION

Professional installation can be provided which includes a walkthrough of the product and its features.



LCD LANDSCAPE ADVERTISING DISPLAY 7" - 82"

This new range of LCD display is purpose built to operate as an Advertising Display suitable for applications in retail; public service such as hospitals, financial institutions and places of entertainment such as a gym or cinema. They are supplied with a wall mount for mounting in landscape mode.

Each display includes an integrated media player that will accept CF or SD memory cards or USB memory sticks. If you have an application where a continuous display of images or text is required and where the data is changed with ease, then this is a very cost effective solution.

Simply insert a SD Memory Card and power on. The screen automatically starts playing the images, video and music that are loaded onto the card. You can set the play order and interval time of each slide including the start and stop times, giving you complete control over every aspect of your digital advertisements



ADVERTISING
DISPLAY MOUNTED
IN PORTRAIT MODE

"32 INCH ADVERTISING DISPLAY IDEAL
FOR MENU BOARDS"



LCD LANDSCAPE ADVERTISING DISPLAY 7" - 82"



FREE SOFTWARE

A user friendly and simple to use playlist creator and editor software is supplied free of charge with this product. It allows the user to create professional looking media content within minutes. Included are professional transition options with the software. Although all our screens are plug and play and will automatically play in a loop when inserted with a usb drive loaded with media content such as images.

VIDEO FORMATS

File format such as power point or flash can be converted to a format which is compatible with these displays.

INSTALLATION

Professional installation can be provided which includes a walkthrough of the product and its features.

Product Name	LCD Landscape Advertising Display								
Display Size	17 Inch	19 Inch	32 Inch	40 Inch	46 Inch	52 Inch	55 Inch	70 Inch	82 Inch
Resolution	1280x1024	1440x900	1366x768	1920x1080	1920x1080	1920x1080	1920x1080	1920x1080	1920x1080
Display Area (mm)	337.9x270.3	480x255.2	697.68x392.26	883.1x495.6	1016.3x570.5	1209.6x680.4	1226x719.2	1554.6x877.6.2	1800x1010
Unit Size (WxHxD mm)	574x424x40	591x345x51	805x490x87	992x593x102	1124x668x90	1268x761x104	1303x799x117.8	1620x947.6x130	1866x1080x142.6
Net Weight	9kg	11kg	22kg	32kg	34.6kg	45kg	50kg	80kg	93kg
Vesa Holes (mm)	100x100	100x100/ 300x200	350x330/ 400x200	450x280/ 400x200	600x400/ 450x300/ 400x200	600x400/ 600x280/ 600x120	600x400/ 600x280/ 600x120	800x400	800x400
Brightness	300 cd/ m ²	300 cd/m ²	450 cd/m ²	500 cd/m ²	500 cd/m ²	500 cd/m ²	600 cd/m ²	600 cd/m ²	700 cd/m ²
Ratio	4:3	16:9	16:9	16:9	16:9	16:9	16:9	16:9	16:9
Contrast Ratio	600:1	700:1	3000:1		2000:1		1500:1		2000:1
Input Voltage	AC110-240V(50Hz-60Hz)								
Working Temp	0 °C to 50 °C								
Media Formats	VIDEO(MPEG,AVI,Divx,Xvid,VOB), MP3,JPEG					MPEG1(VCD),MPEG2(DVD), AVI,Divx,Xvid,JPEG,MP3			
Memory	2GB SD CARD (Supplied)								
Audio	2W,8Ω			5W,8Ω					
Card Type	CF/SD/USB								
Accessories	Mains Cable, CD, Key, Remote Control, Hanging board								

FREESTANDING PORTRAIT DIGITAL POSTER 46" - 82"



This new range of Digital poster displays are purpose built to operate as a digital poster suitable for applications in retail; public service such as hospitals, financial institutions and places of entertainment such as a gym or cinema.

display of images and content is changed with ease, then this is a very cost effective solution. Simply power on, the screen automatically starts playing the images, video and music that are loaded onto the internal memory card. You can set the play order and interval time of each slide including start and stop times, giving you complete control over every aspect of your digital presentation.

Each display includes an integrated media player that will accept a USB memory stick to update media files.

If you have an application where a continuous

Features

- Modern appearance
- High quality gloss finish
- Power time settings
- Remote control
- Lock protect
- User friendly
- Designed for 24/7 usage
- Metal back casing

**“WE PROVIDE A
TOTAL END TO
END SOLUTION”**

DIGITAL ADVERTISING

Digital display signage use adds a new dimension to the conventional advertising effort. In digital advertising success is achieved through the creation of compelling content, it calls for a brilliant combination of graphics, colors, text, and message content that will stir a potential customer into making a purchase. For a firm that is in the business of supplying digital display signage solutions it is of essence that a client's need is thoroughly understood from the outset. The digital advertising content thus created should take into consideration the nature of the client's business and clientele, the location of the client's business site(s), and what the best advertising content will contain.

CUSTOM SOLUTION

The displays can be modified to accept VGA input as the display has sufficient space inside the housing to hold a PC or a network media player. The option of touch screen will provide users with a more involved and interactive experience.

WARRANTY

This product comes with onsite warranty, engineers will repair the screen onsite.

OUTDOOR USAGE

These displays can be modified for outdoor usage.



FREESTANDING PORTRAIT DIGITAL POSTER 46" - 82"



CUSTOM SOLUTION

The displays can be modified to accept VGA input as the display has sufficient space inside the housing to hold a PC or a network media player. The option of touch screen will provide users with a more involved and interactive experience.

WARRANTY

This product comes with onsite warranty, engineers will repair the screen onsite.

OUTDOOR USAGE

These displays can be modified for outdoor usage.

Product Name	Freestanding Portrait Digital Poster				
Display Size	46 Inch	52 Inch	55 Inch	70 Inch	82 Inch
Resolution	1920x1080	1920x1080	1920x1080	1920x1080	1920x1080
Display Area (mm)	562.54x1008.35	640x1144	693.89x1241.36	877.6x1554.6	719.2x1226
Unit Size (WxHxD mm)	705x1699x128	802x1699x128	802x1950x128	1052x2014x191	1194.4x2200x244
Net Weight	90kg	100kg	115kg	140kg	160kg
Brightness	500 cd/ m ²	700 cd/ m ²	600 cd/ m ²	600 cd/ m ²	600 cd/ m ²
Ratio	16:9	16:9	16:9	16:9	16:9
Contrast Ratio	3000:1	3000:1	1200:1	1500:1	1500:1
Input Voltage	AC110~240V(50Hz~60Hz)				
Working Temp	0 °C to 50 °C				
Media Formats	VIDEO(MPEG,AVI ,Divx,Xvid,VOB),MP3,JPEG				
Memory	2GB				
Port	USB				
Accessories	AC Cable, CD, Key, Remote Control, Stand				
Optional Extras	DVI,VGA Inputs				
	Touch Screen				
	Wheels				

DESIGN

Incredibly thin (33mm D) and really looks like a slim light box mounted on to the wall. It replaces traditional posters and is ideal for all types of environments, especially where information is constantly changing. The screens look amazing as they have a superb gloss finish, which gives them a very elegant and clean look.

ECO-FRIENDLY TIMER

Eco-Timer allows you to save energy at night. Automatically starts up at scheduled times plus when the power is turned off and then switched back on it immediately goes straight back to the original portrait format.

WARRANTY

UK based Service centre, Faulty screens will either be repaired or replaced immediately.

WALL MOUNTED DIGITAL POSTER (PORTRAIT DISPLAY) 20" - 40"



Features

- Modern appearance
- High quality gloss finish
- Power time settings
- Remote function
- Lock protect
- User friendly

This new range of wall mounted digital poster displays are purpose built to operate as a digital poster suitable for applications in retail;

public service such as hospitals, financial institutions and places of entertainment such as a gym or cinema. They are supplied with a wall mount for mounting in Portrait mode.

Each display includes an integrated media player that will accept CF or SD media cards or USB memory sticks.

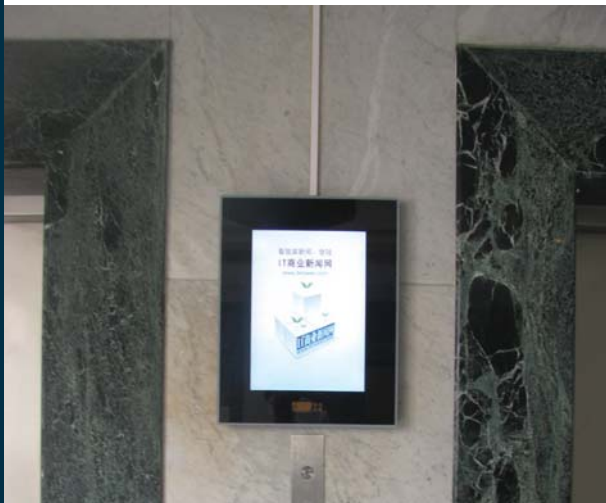
If you have an application where a continuous display of images or text is required and where the content is changed with ease, then this is a very cost effective solution.

Simply insert a SD Memory Card and power on, the screen automatically starts playing the images, video and music that are loaded onto the card. You can set the play order and interval time of each slide including start and stop times, giving you complete control over every aspect of your digital presentation.

See The Big Picture

DIGITAL ADVERTISING

Digital display signage technology and digital advertising is the way forward for retail advertising. This is true for the businesses that make use of the technology and the firms behind these technology solutions. In using digital display signage businesses gain multiple benefits that go a long way into improving business performance. The use of digital advertising makes it possible for multiple messages to appear continuously on a display screen. Digital display signage technology has added great convenience to advertising in that the physical effort required for sign printing and replacement is no longer necessary. Further, digital advertising means that customers are always presented with the latest sale and event announcements and product/service information.



WALL MOUNTED DIGITAL POSTER (PORTRAIT DISPLAY) 20" - 40"



DESIGN

Incredibly thin (33mm D) and really looks like a slim light box mounted on to the wall. It replaces traditional posters and is ideal for all types of environments, especially where information is constantly changing. The screens look amazing as they have a superb gloss finish, which gives them a very elegant and clean look.

ECO-FRIENDLY TIMER

Eco-Timer allows you to save energy at night. Automatically starts up at scheduled times plus when the power is turned off and then switched back on it immediately goes straight back to the original portrait format.

WARRANTY

UK based Service centre, Faulty screens will either be repaired or replaced immediately.

Product Name	Wall Mounted Digital Poster (Portrait Display)		
Display Size	20 Inch	32 Inch	40 Inch
Resolution	1600x1200	1366x 768	1920x1080
Display Area (mm)	306x408	394.4x698.8	491.66x879.16
Unit Size(WxHxD mm)	587x485x33	914.4x610x66	1098x711x65
Net Weight	13.5kg	22kg	28kg
Brightness	300 cd/m ²	500 cd/m ²	500 cd/m ²
Ratio	4:3	16:9	16:9
Contrast Ratio	600:1	3000:1	3000:1
Input Voltage	AC110~240V(50Hz~60Hz)		
Working Temp	0 °C to 50 °C		
Media Formats	VIDEO(MPEG,AVI,Divx,Xvid,VOB), MP3,JPEG		
Memory	2GB (Option for extra internal memory)		
Port	USB	SD/USB/CF	
Accessories	Mains Cable, CD, Key, Remote Control, Hanging board		

TILING LCD DISPLAY (VIDEO WALL)

NARROW BEZEL DIGITAL INFORMATION DISPLAY 40" - 46"

Narrow Bezel DID tiling technology provides a solution where by displays can be tiled together to create a much larger digital signage solution.

Applications

With unique technique of Samsung, boasting high luminance of 700cd/m2 high contrast ratio 1200:1 proper colour temp of 100000k ensuring a perfect display even in sunshine.

Technique

Special tiling technique especially for HD viewing in full screen. The resolution of each unit is 1920 x 1080, and with its special tiling technique, the whole screen boasts 1080p HD display.

Features

- Needing no single controller to tile units
- The narrowest bezel up to now at only 7.3mm at joining displays
- Full high definition display – 1080p
- Special module design for both single and tiled use
- Adoption of Samsung DID panel – long lifetime – high reliability – specialist in displays



INSTALLATION

Professional installation service is available, to ensure you are up and running without any difficulties.

NARROW BEZEL

The bezel surround is very thin which makes these displays ideal for tiling, giving the viewer a clear picture of content being displayed.

SIZES

Tiling can be done in various configurations to suit the application and space available.



"WE PROVIDE A TOTAL END TO END SOLUTION."

NARROW BEZEL DIGITAL INFORMATION DISPLAY 40"- 46"

Product Name	40" NARROW BEZEL LCD PANEL	46" NARROW BEZEL LCD PANEL	46" SUPER NARROW BEZEL LCD PANEL
Screen Size (active area)	40 inch	46 inch	46 inch
Bezel Size (mm)	12.5	12.5	Bottom: 2.4 Top 4.3
Aspect Ratio	16:9	16:9	16:9
Resolution	1920x1080	1920x1080	1920x1080 (WXGA)
Pixel Pitch (HxW mm)	0.648x0.648	0.7455x0.7455	0.7455x0.7455
Product Dimensions (mm)	524.2(W) x 911.7(H) x 98.7(D)	600.6(W) x 1047.4(H) x 103(D)	579.84(W) x 1025.65(H) x 95.83(D)
Response Time	8ms	8ms	8ms
Displayable Colours	8 BIT,16.7M	8 BIT,16.7M	16.7M
Brightness	700cd/m ²	700cd/m ²	700cd/m ²
Contrast Ratio	1200:1	1200:1	3000:1
Colour Temperature	10000K	10000K	10000K
Viewing Angle	178 degrees	178 degrees	178 Degrees
Active Area	885.168(H) x 497.664(W)	1018.353(H) x 572.544(W)	1018.3(H) x 572.5(W)
Power Supply	AC 100V ~ 240V,50/60Hz,Universal +/- 10%	AC 100V ~ 240V,50/60Hz,Universal +/- 10%	100V ~ 240V(50/60Hz)
Power Consumption	250W typical normal operation	300W typical normal operation	Operate 200 Watt (Max 300 watt)
Power Management	VESA DPMS	VESA DPMS	VESA DPMS
Backlight Life	50000 hours	50000 hours	50000 hours
Recommended Resolution	1366 x 768	1366 x 768	1366 x 768
(PC) input	Video	1.0V p-p 75ohm	
		NTSC/PAL	
	VGA	0.7V p-p,75ohm	
		VGA60,SVGA60,XGA60,UXGA60 1280X720(60Hz),1360X768(60Hz),1920X1080(60Hz)	
	DVI	DVI VGA60,SVGA60,XGA60,SXGA60,UXGA60	
RGB/HV	0.7V p-p,75ohm		
	VGA60,SVGA60,XGA60,SXGA60,UXGA60 1280x720(60Hz),1360X768(60Hz),1920X1080(60Hz)		
YUV	ypbpr		
Protection glass	Anti Glare	Reflection Rate ≤0.5%	
Temperature	Operational	0-50°C	
	Storage	-20~70°C	
Humidity	Operational	20-80%	
	Storage	20-80%	

INSTALLATION

Professional installation service is available, to ensure you are up and running without any difficulties.

NARROW BEZEL

The bezel surround is very thin which makes these displays ideal for tiling, giving the viewer a clear picture of content being displayed.

SIZES

Tiling can be done in various configurations to suit the application and space available.

INSTALLATION

Professional installation service is available, to ensure you are up and running without any difficulties.

APPLICATIONS

CCTV Displays are ideal for applications within the security industry for example within the police, road traffic management and any organisation which has security as a key aspect within their organisation.

SUPPORT FOR TILED VIDEO WALL

Unique frame correction function can eliminate the staggering of image caused by the bezel. This function can support tiled video walls freely in 2x2, 3x3, 4x4 or 5x5



CCTV MONITORS



These new range of displays have powerful interfaces with VGA,DVI and BNC (CVBS RGB/HV) Connectors,making them ideal for usage as CCTV monitors.

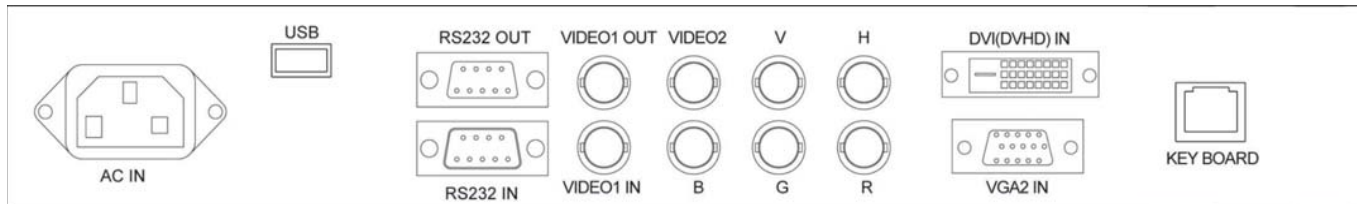
Features

- Designed for long running hours
- Rich vivid colour display
- High contrast ratio and sharpness
- High definition and stable colour performance
- Ability to be tiled
- Powerful RS232 – Easy to control and manage
- Automatic ON/OFF timer- the monitor is embedded with a powerful timer, to save power when the monitor is not in use

“WE PROVIDE A TOTAL END TO END SOLUTION.”



See The Big Picture



Remote Function

The monitors can be controlled remotely through RS232 . (Two-way management ports: one for input, one for output).

Supporting tiled video wall and image sharing

Unique frame correction function, which will eliminate the shuddering images on display. This feature can support tiled video walls freely 2x2, 3x3,4x4 or 5x5

CCTV MONITORS



INSTALLATION

Professional installation service is available, to ensure you are up and running without any difficulties.

APPLICATIONS

CCTV Displays are ideal for applications within the security industry for example within the police, road traffic management and any organisation which has security as a key aspect within their organisation.

SUPPORT FOR TILED VIDEO WALL

Unique frame correction function can eliminate the staggering of image caused by the bezel. This function can support tiled video walls freely in 2x2, 3x3, 4x4 or 5x5

Display	Model Name	CCTV Monitor							
	Screen Size	20 inch	32 inch	40 inch	46 inch	52 inch	55 inch	70 inch	82 inch
	Unit Size (WxHxD mm)	342.7x441.8x82	453.6x763.6x91	556x956x93.7	631x1087x94.2	723x1230x103	788x1329x99.4	1037x1715x140.6	1163x1953x164.1
	Display Size (HxW mm)	408X306	697.67X392.25	887.17X499.66	1020.35X574.5	1158X654	1209X680	1553.6X875.6	1805.7X1015.7
	Pixel pitch(HxW mm)	0.255x0.255	0.51075x0.51075	0.461x0.461	0.530x0.530	0.6x0.6	0.6x0.6	0.807x0.807	0.9405x0.9405
	Resolution	1600x1200	1366x768	1920x1080	1920x1080	1920x1080	1920x1080	1920x1080	1920x1080
	Brightness	300cd/m ²	450cd/m ²	500cd/m ²	450cd/m ²	500cd/m ²	500cd/m ²	600cd/m ²	600cd/m ²
	Viewing Angle	80/80/80/80	89/89/89/89	89/89/89/89	89/89/89/89	89/89/89/89	89/89/89/89	89/89/89/89	89/89/89/89
	Display Color	16.7M	16.7M	1.07B	16.7M	16.7M	16.7M	16.7M	16.7M
	Response Time	8 ms	8 ms	8 ms	8 ms	8 ms	8 ms	8 ms	8 ms
	Color Temp	6500K	10000K	10000K	10000K	10000K	10000K	10000K	10000K
	Contrast Ratio	800:1	5000:1	2000:1	4000:1	3000:1	5000:1	2000:1	2000:1
	Backlight Life	50000H	50000H	50000H	50000H	50000H	50000H	50000H	50000H
	Power	82W	150W	250W	300W	400W	450W	1000W	1080W
	Box size (mm)	575x510x220	970x620x250	1145x777x231	1290x858x260	1538x955x254	1538x955x274	2162x1624x715	2410x1755x715
Input	Video	BNC (two)	Composite	1.0V p-p 75ohm					
				NTSC/PAL					
	VGA	15PIN D-SUB	Analog RGB	0.7V p-p,75ohm					
				VGA60,SVGA60,XGA60,UXGA60 1280X720(60Hz),1360X768(60Hz),1920X1080(60Hz)					
				Sync	Seperate:TTL Level (pos./Neg.)				
DVI	DVI-D	Digital RGB	DVI VGA60,SVGA60,XGA60,SXGA60,UXGA60						
RGB/HV	BNC(RGBHV)	Analog RGB	0.7V p-p,75ohm						
			VGA60,SVGA60,XGA60,SXGA60,UXGA60 1280x720(60Hz),1360X768(60Hz),1920X1080(60Hz)						
			Sync	Seperate:TTL level (Pos./Neg.)					
Output	Video	BNC	Composite	Output,composite 1.0V p-p with 75 ohm terminated					

OPEN FRAME DISPLAYS

OPEN FRAME

No external players required. Display has integrated player. There are no external attachments on the display.

CUSTOM SOLUTION

Designed for custom surrounds, and creating bespoke information kiosks.

APPLICATION

This open frame display can be utilised within a number of applications such as, an exhibition where the client requires a customised look on their stand, or within an application where the client cannot locate a solution which suits them and a bespoke display unit has to be built to meet their requirements.



These open frame displays can be mounted with a bespoke front panel, or they can be embedded within a bespoke housing. Open frame displays are ideal for use in kiosks, exhibition displays, and wherever else the screen is to be used within a bespoke designed device.

Features

- Loop video and photo which requires no external player
- Powerful playlist manager manages the transition mode between pictures and display time
- Automatic on/off timer built in to the display on a 3 levels timer setup
- Scroll message – displaying scrolling messages with pictures and video
- Option of external devices, works with many devices such as motion sensors, scanners etc

“WE PROVIDE A TOTAL END TO END SOLUTION.”



See The Big Picture

Brand building

The open frame display is a great solution for an application where the display forms a part of the advertising, the display is there to grab attention and form the first point of attraction towards the product or service being advertised.

This form of advertising is becoming popular with the bigger players who need to build and maintain brand reputation. Enhancing their static advertising banners and displays with interactive multimedia advertising solutions, is being viewed as the answer.

OPEN FRAME DISPLAYS



OPEN FRAME

No external players required. Display has integrated player. There are no external attachments on the display.

CUSTOM SOLUTION

Designed for custom surrounds, and creating bespoke information kiosks.

Model	Open Frame Advertising Display					
Display Size	12 inch	15 inch	19 inch	22 inch	32 inch	40 inch
Resolution	800x600	1024x768	1440x900	1680x1050	1366x768	1920x1080
Size (WxHxD mm)	240x343.4x40.5	256.5x387.5x42	281x489x48	324x554.8x46	455x822x82	556x1014x100.1
Display Area (HxW mm)	247x187	307.4x231.30	406.24x253.15	473.76x296.10	702.8x398.4	885.17x497.66
Brightness	330 cd/m ²	300 cd/m ²	300 cd/m ²	300 cd/m ²	450 cd/m ²	500 cd/m ²
Ratio	4:3	4:3	16:10	16:10	16:9	16:9
Contrast Ratio	330:1 typ	300:1 typ	700:1 typ	1000:1 typ	1200:1 typ	1200:1 typ
Media Formats	MPEG 1/2/4,MP3,JPEG					
Built in memory	2GB (Included)					
Audio	2W,8Ω			5W,8Ω		
Card Type	CF,SD					
Import Media	USB					
Accessories	Remote,Mains Adaptor and CD					

APPLICATION

This open frame display can be utilised within a number of applications such as, an exhibition where the client requires a customised look on their stand, or within an application where the client cannot locate a solution which suits them and a bespoke display unit has to be built to meet their requirements.

OPEN FRAME TOUCH SCREEN DISPLAYS

INFORMATION KIOSK

Create your own information kiosk surround. The open frame display gives you more flexibility creating the ideal advertising or information unit.

MEDIA PLAYER

Built in media player. No need for any attachments to the display apart from the bespoke surround

Software

Software to create professional interactive touch screen content is included. The software allows you to create interactive programs with ease.

APPLICATION

Examples of application of this touch screen open frame display are Interactive information kiosks which could be placed within a public area such as shopping or leisure centres.

This range of open frame touch screen displays are the ideal solution for kiosk information systems, gaming/amusement, and light industrial shop-floor automation. This touchscreen display requires no external player, the unit also comes complete with software to enable users to easily create professional looking interactive content. As these displays require no external player they offer exceptional flexibility in their application, making them versatile and ideal for many organisations.



Features

- Interactive display unit which can be embedded within any bespoke/customised surround. Needing no computer and having low running costs.
- All interactive files are stored in CF or SD cards, and will display automatically when the display is turned on.
- Users can use the advanced editing software to edit interactive media, Creating professional looking touch screen programs.
- The displays allow content to be updated very easily through the use of a USB port.
- Modularised design enables customers to design and install these units within any bespoke frame.

OPEN FRAME TOUCH SCREEN DISPLAYS



INFORMATION KIOSK

Create your own information kiosk surround. The open frame display gives you more flexibility creating the ideal advertising or information unit.

MEDIA PLAYER

Built in media player. No need for any attachments to the display apart from the bespoke surround

Software

Software to create professional interactive touch screen content is included. The software allows you to create interactive programs with ease.

APPLICATION

Examples of application of this touch screen open frame display are Interactive information kiosks which could be placed within a public area such as shopping or leisure centres.

Product Name	Open Frame Touch Screen Displays					
Display Size	12 Inch	15 Inch	19 Inch	22 Inch	32 Inch	40 Inch
Resolution	800 x 600	1024 x 768	1440 x 900	1680 x 1050	1366 x 768	1920 x 1080
Size (WxHxD mm)	240 x 343.40 x 40.50	256 x 387.5 x 42	281 x 489 x 48	324 x 554.80 x 46	465 x 822 x 82	570 x 1014 x 100.1
Display Area (HxW mm)	247 x 187	307.4 x 231.30	406.24 x 253.15	473.76 x 296.10	702.8 x 398.4	885.17 x 497.66
Brightness	330 cd/m ²	300 cd/m ²	300 cd/m ²	300 cd/m ²	450 cd/m ²	500 cd/m ²
Ratio	4:3	4:3	16:10	16:10	16:9	16:9
Contrast Ratio	330:1 typ	330:1 typ	700:1 typ	1000:1 typ	1200:1 typ	1200:1 typ
Voltage	AC110~240V (50Hz~60Hz)					
Working Temp	0 °C to 50 °C					
Media Formats	MPEG 2/4,MP3,JPEG,480P					
Built in memory	Option					
Audio	2W,8Ω			5W,8Ω		
Card Type	CF/SD					
Import Media	USB					
Accessories	Remote ,AC Adapter, CD					
Light Transmittance	100%					
Touch Resolution	4096 x 4096					
Operating Life	> 60,000,000					
Response Time	<8ms					
Accurate Location	Standard deviation <2mm					

SIGNAGE PLAYERS

STAND ALONE SIGNAGE PLAYER (PP02)

Features

- Supporting scrollable text
- Allow to insert videos or pictures instantly
- Allowing mp3 audio to be added
- Supporting background music
- Supporting all kinds of memory cards
- Supporting all kinds of media formats & 1080p picture
- Perfect Output Interface ----- being applicable to PC display, TV and other displays



“WE PROVIDE A TOTAL END TO END SOLUTION.”

NETWORK SIGNAGE PLAYER (PPNET)

Features

Scalability

PPNET Box can be used to distribute content across multiple locations across any network. PPNET Box can clone itself from (subscribe to) another PPNET Box over the network. This feature, known as Channel Manager, allows the same output to be shown on displays more than 500m away, or even on the other side of the world.

Flexibility

PPNET Box works with any LCD, plasma or projected display and accepts content in all major video, audio, animation and graphic formats.

High quality

PPNET Box allows the delivery of fast Flash and video material, ensuring outstanding clarity on all text and graphics so that your audience can read your messages easily.

Simple to use

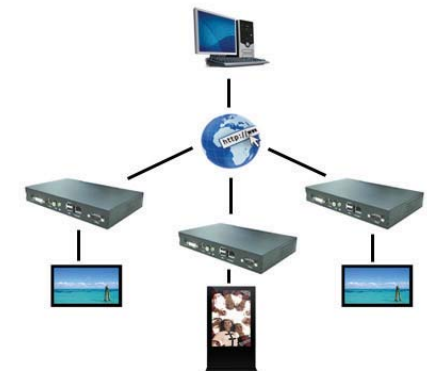
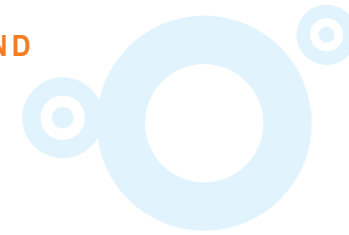
Simply choose and import your content, pick a screen layout, enter the times you want the content to appear and the jobs done!

Easy to update

PPNET Box lets you add and update your own messaging information online at any time.

Reliability

PPNET is based on a Linux operating system which is known for its reliability and resilience against viruses.



SOFTWARE

Free management software to control displays from one central location.

OUTPUTS

Player can output using various methods including LAN and WIFI, HD output is also available with the player.

NETWORK PLAYER

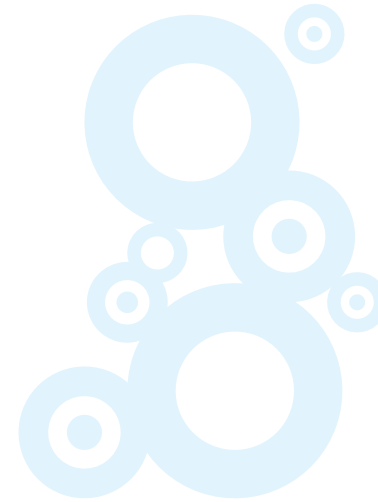
The network player allows the user to control multiple screens in multiple locations from one central location, Making it easier to add, change or edit content.

SIGNAGE PLAYERS

STAND ALONE SIGNAGE PLAYER (PP02)



Model	Standalone Player
Size(mm) (LxWxD mm)	160x130x30
Card Type	CF/MD/MS/SD/MMC/SM/XD/USB
Memory Size	2GB
Media Format	MPEG1/2/4,MP3,JPEG,VOB
Audio	2W,8Ω
Output	VGA, CVBS, Audio (Left/Right)
Media Formats	MPEG1/2/4,MP3,JPEG,VOB,AVI,DIVX,XVID



SOFTWARE

Free management software to control displays from one central location.

OUTPUTS

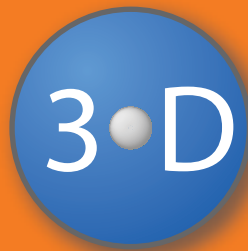
Player can output using various methods including LAN and WIFI, HD output is also available with the player.

NETWORK SIGNAGE PLAYER (PPNET)

Model	Network Player
Size (LxWxD mm)	211x126x34
Weight	0.6kg
Storage	2GB, Optional with bigger capacity up to 40GB
Power Supply	12V DC input
Power Consumption	Approx 5W
Core Processor	Sigma Designs C Single chip digital media processor (Embedded 32-bit RISC CPU)
Video Output	DVI//S-Video/CVBS
Audio Output	Stereo Phone Jack
Network Connection	10/100BaseT(RJ45),LAN,WIFI
Accessories	DC Adapter, Power Cord, DVI to VGA Cable, User Manual
Media Formats	MPEG1/2/4,AVI,DIVX,XVID,WMV,JPEG,VOB

NETWORK PLAYER

The network player allows the user to control multiple screens in multiple locations from one central location, Making it easier to add,change or edit content.



www.3dcentre.com

Sales: 0845 470 0845



Digital Signage

www.3dcentre.com