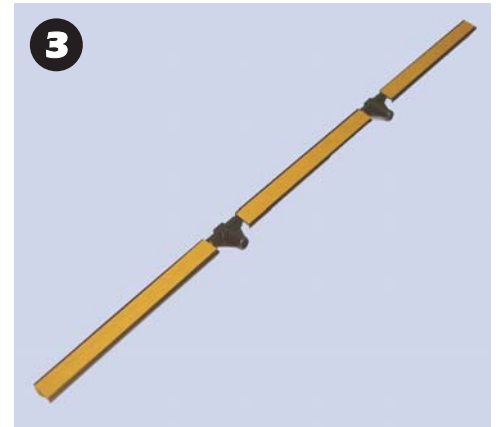
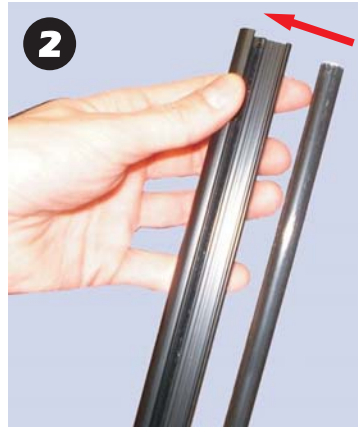
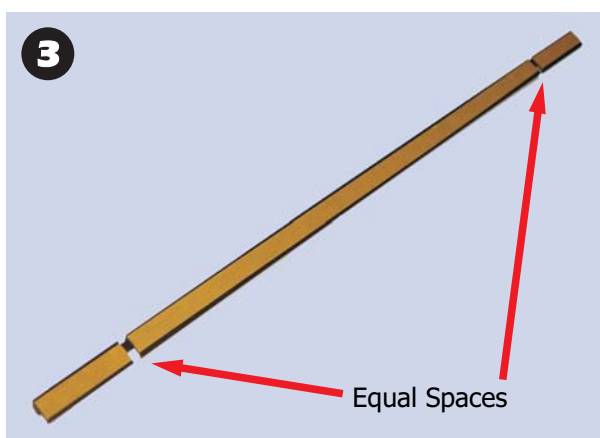
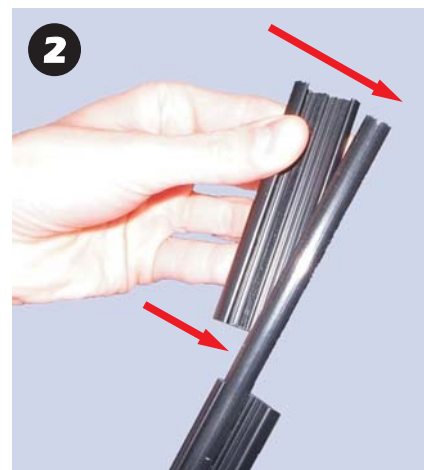
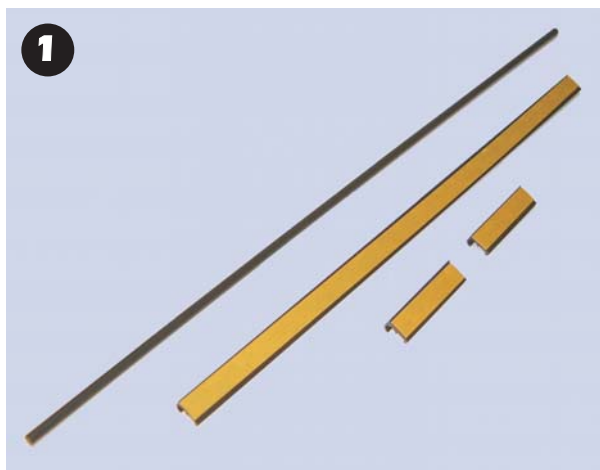


These instructions should be used when converting a 'looped graphic' Ark bannerstand to use Adhesive rails



Push fit all 3 adhesive rails onto the top horizontal pole as shown



Important notes:

Firm pressure should be applied when adhering the graphic to both rails

After fitting, graphics should be left to cure for a minimum of 24 hours prior to use

Push fit all 3 adhesive rails onto the bottom horizontal pole as shown,
The longer rail should be fitted centrally, with the two shorter rails fitted either side to provide spaces for fitting to the Ark feet