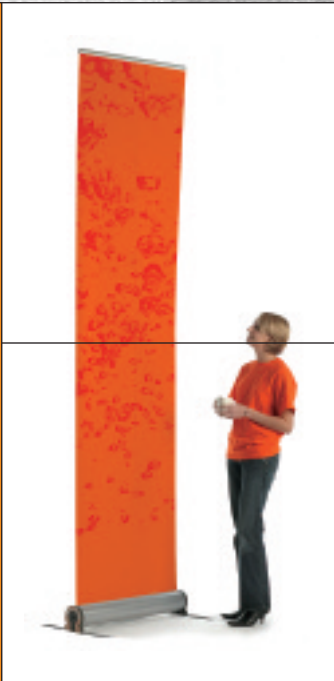


OMEGA GIANT GRAPHIC ROLLER BANNER STANDS

ROLLER BANNER STANDS

ROLLER BANNER STANDS



Quick and easy
assembly

Fully adjustable
telescopic pole

Impressive 3m graphic

plex
DISPLAY
banner stands

OMEGA GIANT

IMPRESSIVE AND ADJ

IMPRESSIVE SINGLE SIDED ROLLER BANNER STAND WITH **FULLY ADJUSTABLE** TELESCOPIC POLE AND SUPPLIED WITH **STABILISING FEET**. OMEGA GIANT OFFERS A **QUICK CHANGE GRAPHIC** FACILITY. ALL ASSEMBLY INSTRUCTIONS ARE INCLUDED. IT IS IDEAL FOR USE AT EXHIBITIONS AND IN SHOWROOMS.

FEATURES

- Smart satin anodised aluminium casing with transparent plastic end caps
- Removable end caps offering the option to add personalised designs or logos
- Patented self tensioning mechanism offers easy change graphic facility
- Telescopic pole extends from 1500mm to 3000mm
- Visible graphic panel 800mm wide
- Supplied with a smart carry bag

ACCESSORIES

- Extensive selection of lighting options



International Patent No. 2391685

plex
DISPLAY
banner stands

IMPRESSIVE 3M GRAPHIC | PERSONAL

USTABLE



1. Helios 3
50w hi spotlight
2. Helios 4
50w hi spotlight
3. Helios 5
50w hi spotlight
4. Helios 6
50w hi spotlight
5. Helios 7
50w low voltage spotlight
6. Helios 8
50w low voltage spotlight

ROLLER BANNER STANDS

SPECIFICATIONS

GRAPHIC PANEL SIZES

Finished graphic panel size

From 2150 to 3050mm long x 800mm wide

Visual graphic area

From 2100 to 3000mm long x 800mm wide

Maximum finished graphic panel thickness

250 micron

SYSTEM SIZES

Unassembled

800mm = 875 (W) x 135 (D) x 153 (H)mm

Assembled (inc stabilising feet)

800mm = 875 (W) x 465 (D) x 3170 (H)mm

WEIGHTS

(INCLUDING 300MM LONG GRAPHIC & BAG)

800mm = 6.0 kg

TELESCOPIC POLE HEIGHTS

Min height = 1100mm

Max Height = 3000mm

COMPONENT LIST

Omega Unit

4 part telescopic pole set

Graphic gripper rail

2 - stabilising feet

Padded carry bag

plex
DISPLAY

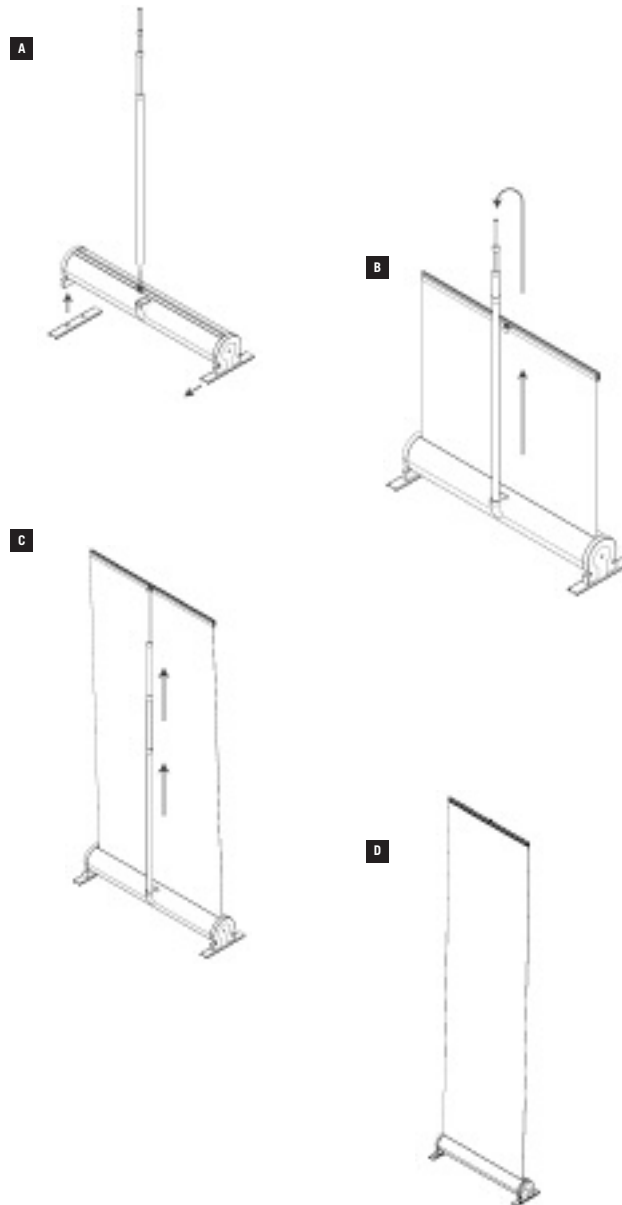
International Patent Application

No. WO 02/057588

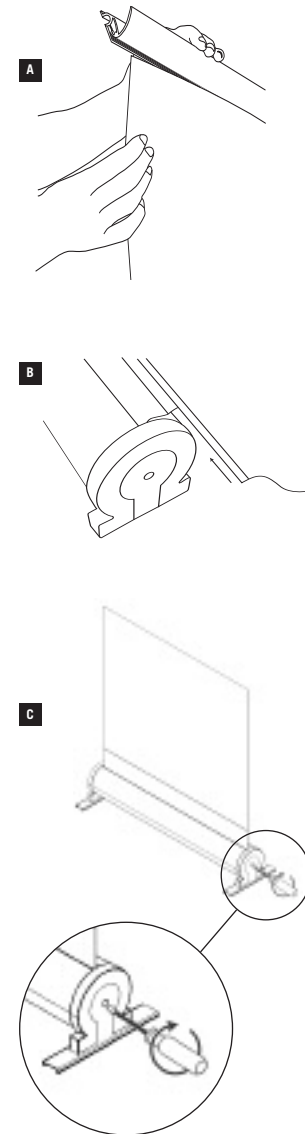
No. PCT/GB02/00129 in USA

Issue 1 - Jan 2005

OMEGA GIANT GRAPHIC ASSEMBLY INSTRUCTIONS



GRAPHIC ATTACHMENT



A Attach graphic to gripper rail.

B Attach quick change extrusion to rear bottom edge of graphic panel. Slide graphic on to quick change extrusion on Omega leader.

C Use a standard flat headed screwdriver to wind the graphic into unit. We recommend between 20 and 24 complete clockwise turns to achieve optimum tension, although this may vary (+/-) with different styles of graphic materials.

IMPORTANT NOTE REMOVING THE TENSION FROM AN OMEGA

To un-tension graphic panel place a flat headed screwdriver into the slot and push to disengage ratchet.

Hold in and turn anti-clockwise until tension in spring is released. To remove graphic panel carefully slide it off quick change extrusion on leader.