

# Linear Kit 2

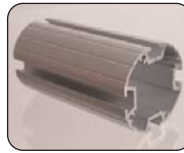
Simple aluminium graphic frame ideal for looped fabric graphics. Linear kit 2 is ideal for all types of promotion, exhibition or semi-permanent display.



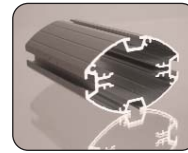
## features & benefits

- Overall assembled size 2000mm (h) x 2220mm (w) x 400mm (d) approx
- Anodised aluminium construction
- Portable, easy assembly
- Available with round or oval profile post options
- Steel oval bases supplied as standard
- 450mm dia steel dome or thermoformed MDF base options also available
- Looped fabric graphic fixing is recommended

## Post options



75mm round



75mm oval

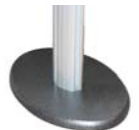
## Base options



Steel oval supplied as std (weight 2kg approx)



450mm dia Steel dome extra cost option (weight 6kg approx)



Thermoformed MDF extra cost option (weight 0.5kg approx)

*Recommended carry bag: LPB*

*Recommended carry bag: LPB1*

## Graphic fixing



Double hemmed looped fabric graphic fixing is recommended

## hardware & graphic specifications

Hardware dimensions (mm): 2000 (h) x 2220 (w) x 400 (d) approx

Weight: 11kg approx (based upon Steel oval bases)

### Looped fabric:

Visible graphic dimensions (mm): 2000 (h) x 2000 (w) approx including a 160mm double hemmed loop at top and bottom of graphic.

Recommended graphic substrate: 105 to 205gsm Lightweight fabric

### Rigid infill:

5mm thick foam board graphics may also be used with kit 1.

Graphic dimensions (mm):

### Rigid infill (1 panel)

1935 (h) x 2012 (w) actual  
1920 (h) x 2000 (w) visible

## additional info

Recommended accessories:



LN112 Literature holder



PS1000 200watt light (see over for fixing method)



LN111 LCD Bracket



AC504 Wheeled carry case

# Assembly Instructions

## Linear Kit 2 includes:



Steel oval base & M10 bolt x 2  
(weight 4kg approx)



Male post x 2  
(weight 2.5kg approx)



Allen key set



PVC clear washer x 2



Female post x 2  
(weight 2.5kg approx)



1000mm wide male graphic rail x 2  
(weight 1kg approx)



1000mm wide female graphic rail x 2  
(weight 1kg approx)



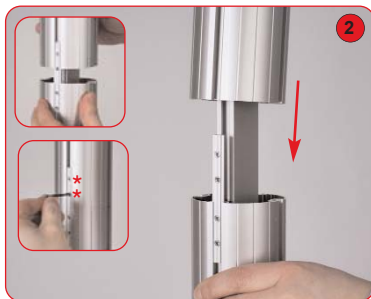
Attach female graphic rail to male graphic rail. Tighten both grub screws using a 2mm allen key. Repeat step for bottom rails.



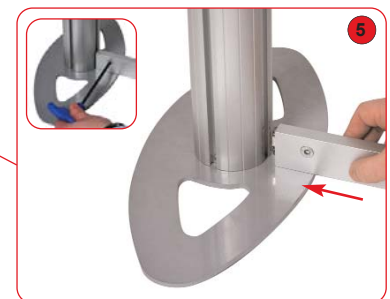
Optional PS1000 lights (not supplied with the kit) can be fitted to the graphics rail using LNB lighting bracket (Available Summer '07)



Slide graphic loop onto top graphic rail. Secure rail to post by tightening the lock using a 5mm allen key. Repeat step for 2nd post.



Align and slide female post over male post, tighten both grub screws using a 2mm allen key. Repeat step for 2nd post.



Slide graphic loop onto bottom graphic rail. Secure rail to post by tightening the lock using a 5mm allen key. Repeat step for 2nd post.



Attach base to male post using M10 bolt and allen key. Ensure clear washer is between base & post. Repeat step for 2nd post.