

Linear Kit 3



Aluminium frame complete with wire kit and 6 x A4 Acrylic poster holders.

features & benefits

- Overall assembled size 2000mm (h) x 1220mm (w) x 400mm (d) approx
- Anodised aluminium construction
- Portable, easy assembly
- 50mm dia round posts
- Steel oval bases supplied as standard
- 450mm dia steel dome or thermoformed MDF base options also available
- Supplied with 6 x A4 acrylic literature holders



A4 literature holders

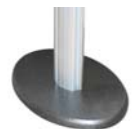
Base options



Steel oval
supplied as std
(weight 2kg approx)



450mm dia Steel dome
extra cost option
(weight 6kg approx)
*Recommended
carry bag: LPB*



Thermoformed MDF
extra cost option
(weight 0.5kg approx)
*Recommended
carry bag: LPB1*

hardware & graphic specifications

Hardware dimensions (mm):

2000 (h) x 1220 (w) x 400 (d)
approx

Weight:

12.5kg approx
(based upon Steel oval bases)

Graphic dimensions (mm):

297 (h) x 210 (w) visible approx
(A4 Portrait holders)

additional info

Recommended accessories:



LN112
Literature holder



PS1000
200watt light
(see over for
fixing method)



LN111
LCD Bracket



AC504 Wheeled carry case

Assembly Instructions

Linear Kit 3 includes:


Steel oval base & M10 bolt x 2
(weight 4kg approx)


Male post x 2
(weight 2.5kg approx)



A4 acrylic literature holders x 6
(weight 2kg approx)



Adjustable wire kit (x4)
(weight 0.5kg approx)




Allen key set



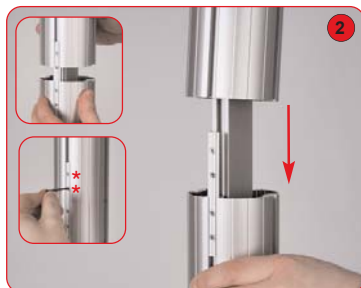
PVC clear washer x 2


Female post x 2
(weight 2.5kg approx)


1000mm male graphic rail x 2
(weight 1kg approx)



Secure top rail to post by tightening the lock using a 5mm allen key. Repeat step for 2nd post and bottom rail.



Align and slide female post over male post, tighten both grub screws using a 2mm allen key. Repeat step for 2nd post.



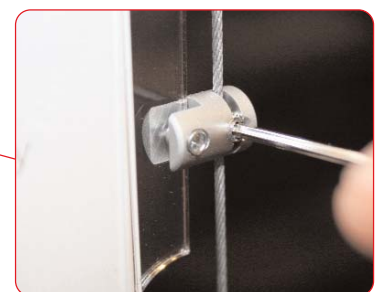
Attach base to male post using M10 bolt and allen key. Ensure clear washer is between base & post. Repeat step for 2nd post.



Optional PS1000 lights (not supplied with the kit) can be fitted to the graphics rail using US-LINEAR lighting bracket.



Attach wire kit to top and bottom rails. Fit the diamond shaped insert into the rail and tighten until secure. If required tension can be added to the wire by rotating the adjuster. Repeat step for remaining wires.



Attach acrylic dispenser to wire. Remove grub screw from poster support using a 2.5mm Allen key. Slide poster support onto wire and re-fix grub screw to secure. Repeat step for remaining poster supports.

