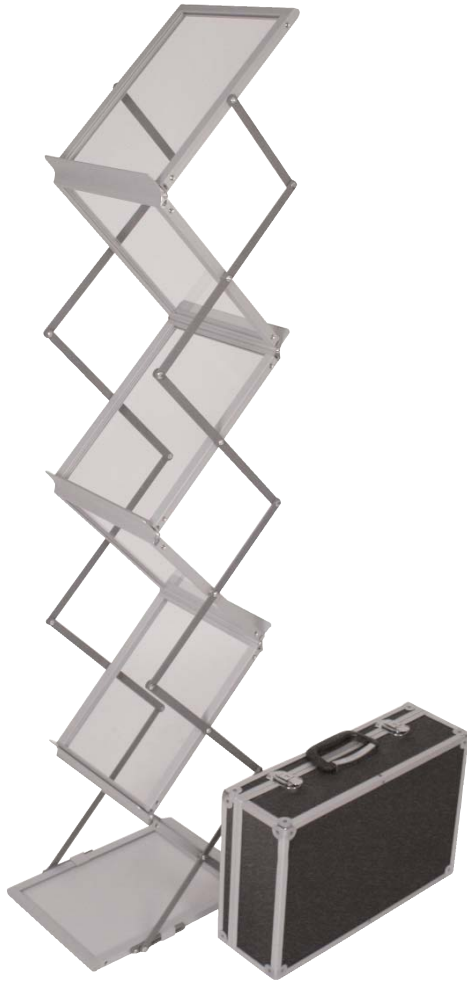


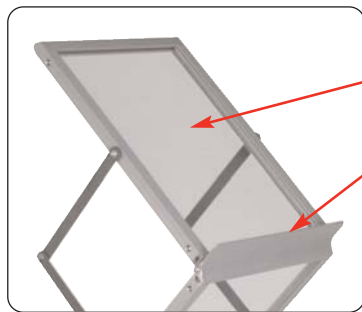
Zed-Up Lite

Zed-up Lite is a popular literature stand, that is stylish and highly portable. Ideal for exhibitions and displays.



Features & benefits

- High tech styling
- Double-sided acrylic shelves
- Heavy duty lockable carry case included
- Collapsible
- Available in anodised silver
- 3 models to suit A3, A4 and A5 literature



Acrylic tray section
7.5mm deep
23mm lip



A3

A4

A5

**NB A4 and A5 versions have 6 pockets,
A5 version has 7 pockets**

hardware specifications

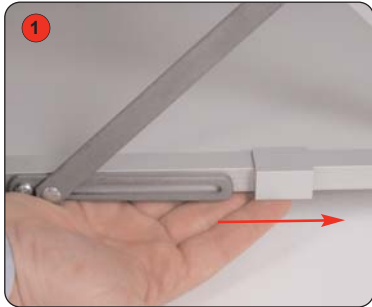
	A3 Zed-Up Lite	A4 Zed-Up Lite	A5 Zed-Up Lite
Assembled dimensions (mm):	1465 (h) x 490 (w) x 370 (d) 57.7" x 19.3" x 14.6"	1475 (h) x 370 (w) x 285 (d) 58.1" x 14.6" x 11.2"	1310 (h) x 215 (w) x 285 (d) 51.6" x 8.5" x 11.2"
Closed dimensions (mm):	145 (h) x 490 (w) x 405 (d) 5.7" x 19.3" 16.0"	120 (h) x 285 (w) x 405 (d) 4.7" x 11.2" x 16.0"	140 (h) x 215 (w) x 320 (d) 5.5" x 8.5" x 12.6"
Overall tray dimensions (mm):	320 (h) x 465 (w) 12.6" x 18.31"	320 (h) x 255 (w) 12.6" x 10.0"	235 (h) x 195 (w) 9.25" x 7.7"
Acrylic tray section dimensions (mm):	305 (h) x 430 (w) 12.0" x 16.9"	305 (h) x 220 (w) 12.0" x 8.7"	215 (h) x 155 (w) 8.5" x 6.1"
Weight (kg):	11kg (24.2lbs) approx	7.5 kg (16.5lbs) approx	6 kg (13.2lbs) approx

All dimensions shown are approx.

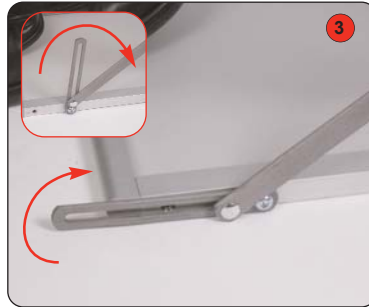
We are continually improving and modifying our product range and reserve the right to vary the specifications without prior notice. All dimensions and weights quoted are approximate and we accept no responsibility for variance. E&OE.

Assembly Instructions

Important: Ensure fingers are kept clear of folding mechanism when opening and closing the unit



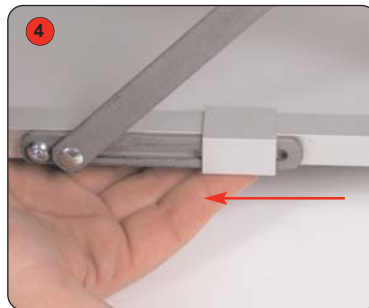
Slide locking tab away from pivot arm at base of unit. Repeat for 2nd locking tab.



Whilst raising the unit note position of the pivot arms. To ensure correct assembly both pivot arms must rotate through 180 degrees.



Holding the top tray, gently raise the trays upwards. Place your foot on the base to aid stability.



Slide locking tab over pivot arm at base of unit. Repeat for 2nd locking tab.



To close:

- 1, Slide the locking tabs away from the pivot arms at the base of unit.
- 2, Lift the top tray and gently lower into the closed position. **(DO NOT DROP)**